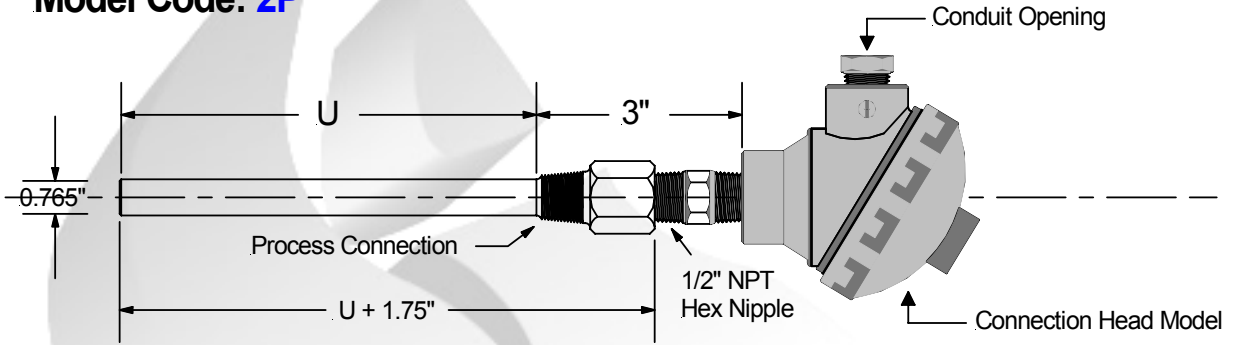


Mineral Insulated RTD & Thermowell Assembly

Standard Straight Threaded Thermowell

Operating Temperature:
-200 C to +500 C Max.

Model Code: **2P**



All Thermowell Assemblies Are Spring Loaded.

Model:

2P

A	B	C	D	E	F	G	H
<input type="checkbox"/>	<input type="checkbox"/>	<input type="checkbox"/>	<input type="checkbox"/>	<input type="checkbox"/>	<input type="checkbox"/>	<input type="checkbox"/>	<input type="checkbox"/>

A	"U" Fractional Dimension
A	1 5/8"
B	2 1/2"
C	4 1/2"
D	7 1/2"
E	10 1/2"
F	13 1/2"
G	16 1/2"
H	22 1/2"

For all other U lengths contact factory for availability.

B	Sheath Material
1	304 Stainless
2	316 Stainless
3	Solid Teflon

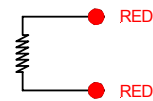
For all other materials contact factory for availability.

C	RTD Element Type	
	Ohms	Class
		A
		B
1 x Pt100	1	2
2 x Pt100	3	4
1 x Pt1000	5	6
2 x Pt1000	7	8

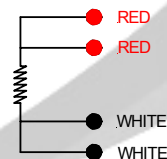
Temperature Coefficient: 0.00385
Platinum element
IEC 751

D	RTD Wire Connection
A	2 Wire Configuration
B	3 Wire Configuration
C	4 Wire Configuration

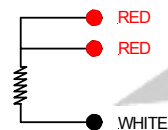
2 Wire Configuration



4 Wire Configuration



3 Wire Configuration



E	Process Connection
1	1/2" NPT
2	3/4" NPT
3	1" NPT

F	Connection Head Model
A	None, 3" Split Leads
B	Cast Aluminum: Standard
C	Cast Aluminum: Mini
D	Polypropylene: FDA Appr.
E	Cast Iron: Standard
F	316 Stainless Steel
G	Explosion Proof

G	Conduit Opening
1	None
2	1/2" NPT
3	3/4" NPT

H	Connection Head Options
N	None
B	No Terminal Block
T	4-20mA Transmitter

Nordic Sensors Ind. Inc. Tel: 1-888-667-3421 & Fax: 1-888-867-9986.