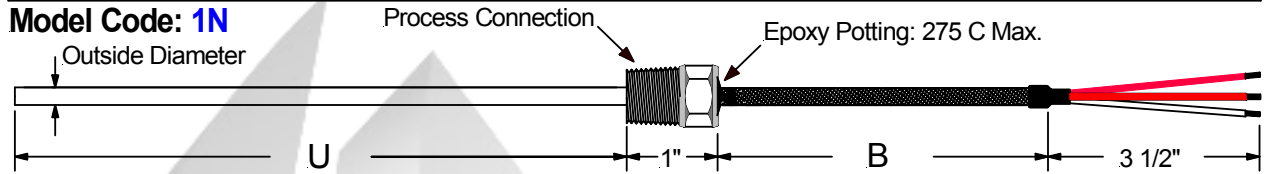


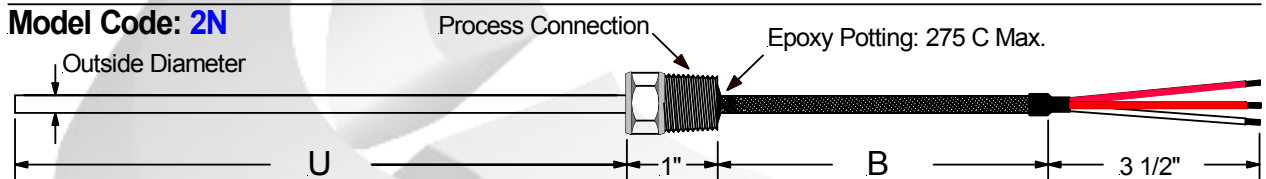
Mineral Insulated RTD Hex Bushing Style RTD

Operating Temperature:
-200 C to +500 C Max.

Model Code: **1N**



Model Code: **2N**



Model: A B C D E F G H I J

1N

2N

A	Outside Diameter
1	0.079"
2	0.125"
3	0.188"
4	0.250"

B	Sheath Material
A	304 Stainless
B	316 Stainless

C	"U" Dimension
Specify "U" Length In Inches <u>0 0 6</u>	
Example "U" is 6" = 006	

D	"U" Fractional Dimension
A	0.125"
B	0.250"
C	0.375"
D	0.500"
E	0.750"
F	None

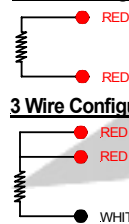
E	Process Connection
1	1/4" NPT
2	1/2" NPT
3	3/4" NPT

F	RTD Element Type		
	Ohms	Class A	Class B
1 x Pt100	1	2	
2 x Pt100	3	4	
1 x Pt1000	5	6	
2 x Pt1000	7	8	

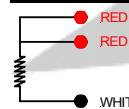
Temperature Coefficient: 0.00385
Platinum element
IEC 751

G	RTD Wire Connection
A	2 Wire Configuration
B	3 Wire Configuration
C	4 Wire Configuration

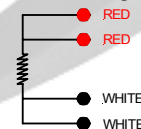
2 Wire Configuration



3 Wire Configuration



4 Wire Configuration



H	"B" Dimension
Specify "B" Length In Inches <u>0 4 8</u>	

Example "B" is 48" = 048

I	Cable Insulation Description
A	24 gage, Stranded, Fiberglass
B	24 gage, Fiberglass, Metal Braid
C	.281" O.D. Flexible Armor Cable
D	.210" O.D. Flexible Armor Cable
E	24 gage, Stranded, Teflon
F	24 gage, Stranded, Sheilded, Teflon
G	24 gage, Stranded, PVC
H	24 gage, Stranded, Sheilded, PVC

J	Termination
1	3 1/2" Split leads & bare ends
2	3 1/2" Split leads & No.10 spade lugs
3	Standard Male Plug (350 F)
4	Standard Female Jack (350 F)
5	Mini Male Plug (350 F)
6	Mini Female Jack (350 F)

Connectors can only be installed on 2 & 3 wire configuration RTDs.