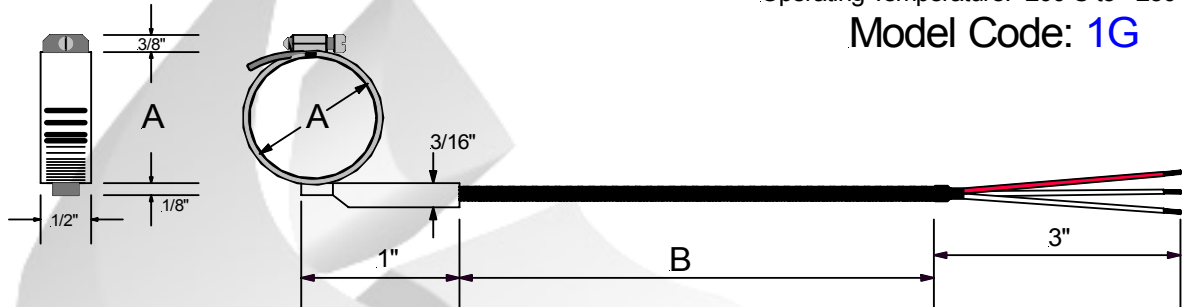


# Plastic Industry RTDs

## Pipe Clamp Style RTD

Operating Temperature: -200 C to +250 C

Model Code: **1G**



Model: **1G**  1.  2.  3.  4.  5.  -  6.  7.

1. **Pipe Clamp Description**  
A = Diameter Range

	Minimum	Maximum
1	1 1/16"	2"
2	1 13/16"	2 3/4"
3	2 9/16"	3 1/2"
4	3"	5"
5	5"	7"

5. **"B" Dimension**

"B" = 0 4 8 "

Leads Wire Length In Inches

2. **Wire Description**

S	26 Gage, Stranded, Stainless Steel Braid
T	26 Gage, Stranded, Teflon
X	0.210 O.D., Flexible Armor, Teflon Wire
F	26 Gage, Stranded, Fiberglass Cable
C	0.210 O.D., Flexible Armor, Fiberglass Wire

6. **RTD Element Type**

Ohms	Class A	Class B
1 x Pt100	1	2
2 x Pt100	3	4
1 x Pt1000	5	6
2 x Pt1000	7	8

Temperature Coefficient: 0.00385  
Platinum element  
IEC 751

3. **Termination Type**

0	3" Split Leads & 1/2" Bare Ends.
1	3" Slip Leads & Spade Lugs
2	Standard Male Plug (2 & 3 Wire config. only)
3	Standard Female Jack (2 & 3 Wire config. only)
4	Mini Male Plug (2 & 3 Wire config. only)
5	Mini Female Jack (2 & 3 Wire config. only)

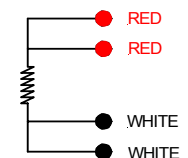
7. **RTD Wire Connection**

A	2 Wire Configuration
B	3 Wire Configuration
C	4 Wire Configuration

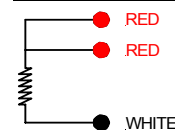
**2 Wire Configuration**



**4 Wire Configuration**



**3 Wire Configuration**



4. **Accessories**

A	None
B	Bx Connector
C	Cable Clamp

Nordic Sensors Ind. Inc. Tel: 1-888-667-3421 & Fax: 1-888-867-9986.